

**Adopted by:**

Winston Salem

**High Point Urban Area MPO**

**Date: November 23, 2010**

**NCDOT**

**Date: January 6, 2011**

**Recommended by:**

**Transportation Planning Branch**

**Date: December 6, 2010**

**Notes :**







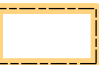

# High Point MPO

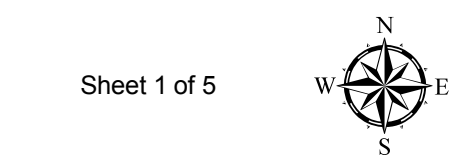
## Comprehensive Transportation Plan

Plan date: November 23, 2010

- Sheet 1 **Adoption Sheet**
- Sheet 2 **Highway Map**
- Sheet 3 **Public Transportation and Rail Map**
- Sheet 4 **Bicycle Map**
- Sheet 5 **Pedestrian Map**

### Legend

-  Schools
-  Airport
-  Roads
-  Rivers and Streams
-  County Boundary
-  Municipal Boundary



Base map date: March 2010

Refer to CTP document for more details

